

# Water Lynx™ Blocks



## Water Lynx 394 (Red Mesh)

- General purpose blend.
- Works well with clays, silicates, and other sediments.
- Designed for slower release and lower solid loads.

## Water Lynx 360 (Green Mesh)

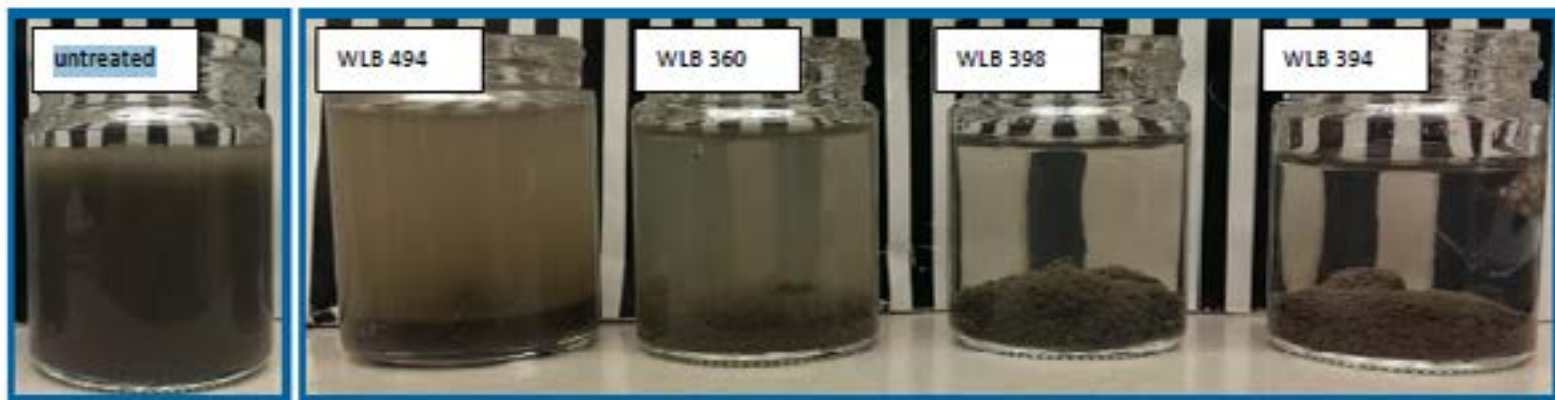
- Works in a wide pH range.
- Works well with lime and concrete process water.
- Designed for a fast release and high sediment loads.
- Tends to make large, strong flocs; useful in duplexes.

## Water Lynx 398 (Blue Mesh)

- Works best with clays.
- Designed for middle to high solid loads.
- Tends to make tight and strong flocs; useful in duplexes

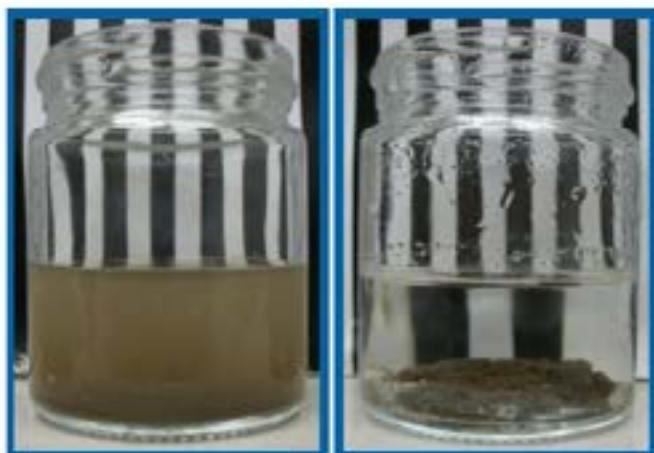
## Water Lynx 494 (Yellow Mesh)

- General purpose blend.
- Works well with clays and higher organic loads.
- Works well in duplexes, usually with WLB 360.

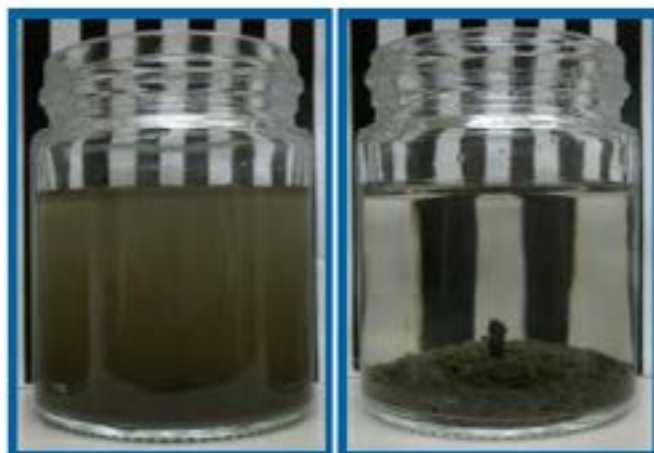


High River, AB; Storm Pond; Untreated (>8000 NTU)

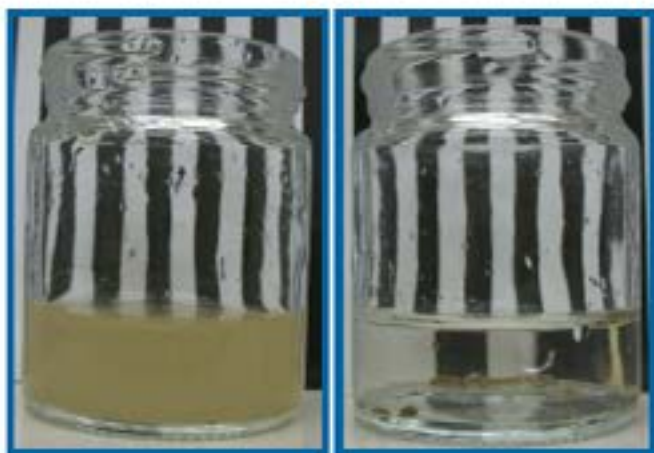
WLB 494 (442 NTU), WLB 360 (108 NTU), WLB 398 (17.53 NTU), WLB 394 (8.75 NTU)



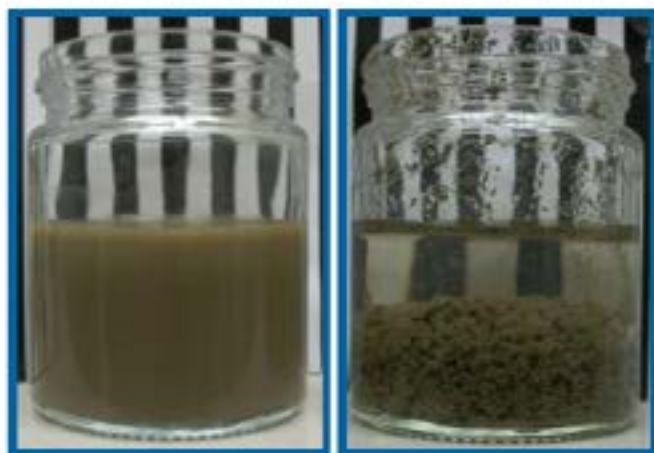
Fernie, BC; River Water;  
Water Lynx Block 494  
718 NTU down to 3.71NTU



United Kingdom; Runoff Water  
Water Lynx Block 394  
359 NTU down to 2.75 NTU



Bruderheim, AB; Sand Washing Recycle Water;  
Water Lynx Block 398  
715 NTU down to 5.52 NTU



Edmonton, AB; Drilling Cuttings;  
Duplex of Water Lynx Blocks 494 & 360  
24,800 NTU down to 18.5 NTU