

Water Lynx Blocks



WATER LYNX 394 (RED MESH)

- General purpose blend.
- Works well with clays, silicates, and other sediments.
- Designed for slower release and lower solid loads.

WATER LYNX 360 (GREEN MESH)

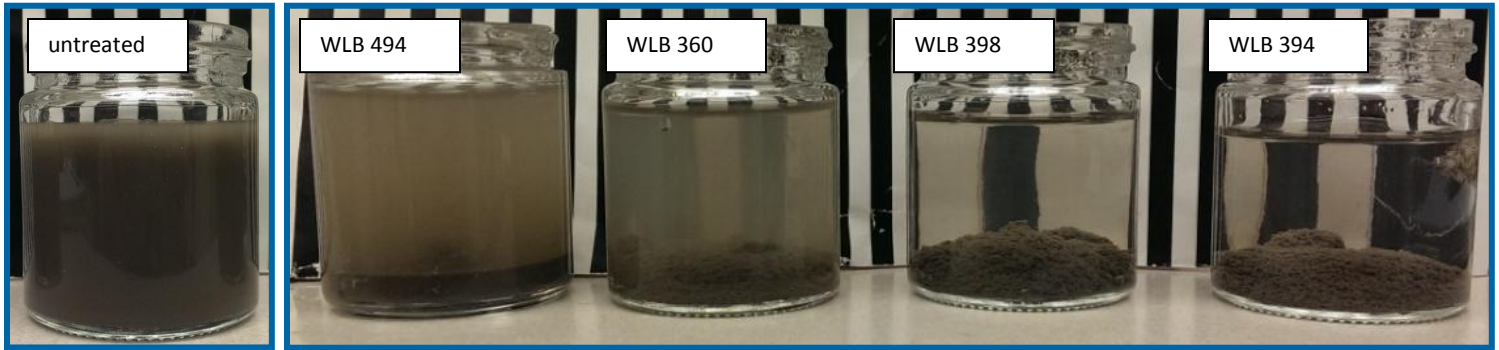
- Works in a wide pH range.
- Works well with lime and concrete process water.
- Designed for a fast release and high sediment loads.
- Tends to make large, strong flocs; useful in duplexes.

WATER LYNX 398 (BLUE MESH)

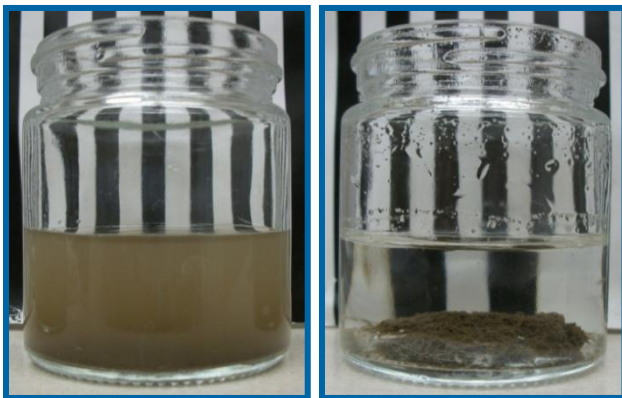
- Works best with clays.
- Designed for middle to high solid loads.
- Tends to make tight and strong flocs; useful in duplexes.

WATER LYNX 494 (YELLOW MESH)

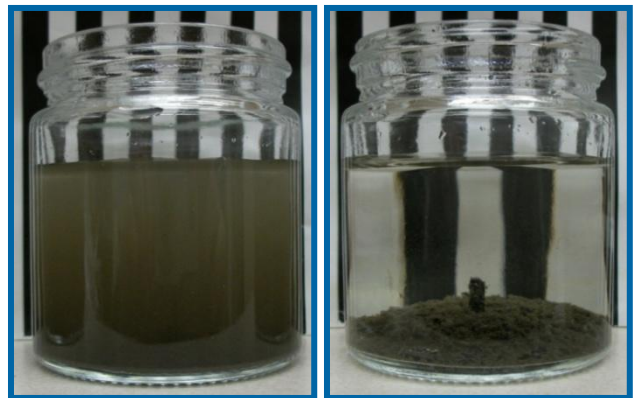
- General purpose blend.
- Works well with clays and higher organic loads.
- Works well in duplexes, usually with WLB 360.



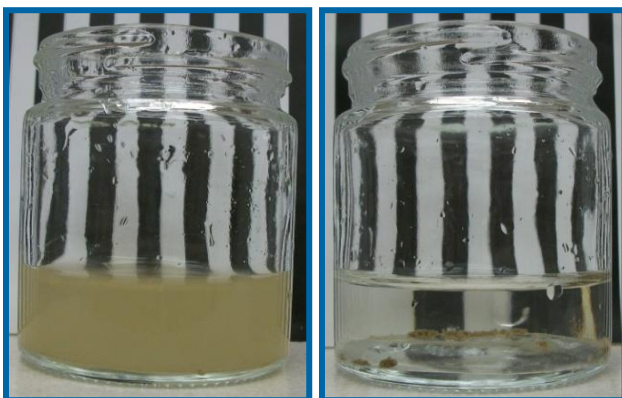
High River, AB; Storm Pond; Untreated (>8000 NTU)
 WLB 494 (442 NTU), WLB 360 (108 NTU), WLB 398 (17.53 NTU), WLB 394 (8.75 NTU)



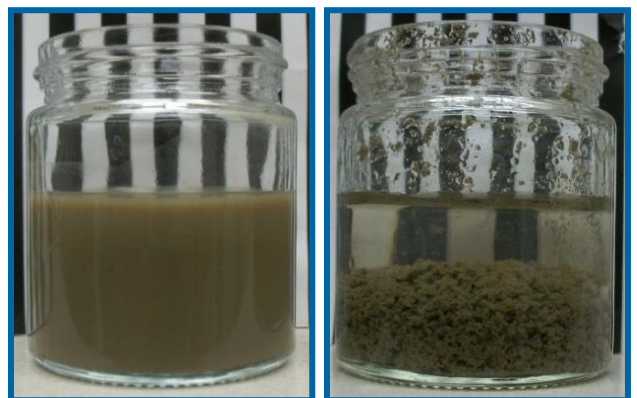
Fernie, BC; River Water;
 Water Lynx Block 494
 718 NTU down to 3.71NTU



United Kingdom; Runoff Water
 Water Lynx Block 394
 359 NTU down to 2.75 NTU



Bruderheim, AB; Sand Washing Recycle Water;
 Water Lynx Block 398
 715 NTU down to 5.52 NTU



Edmonton, AB; Drilling Cuttings;
 Duplex of Water Lynx Blocks 494 & 360
 24,800 NTU down to 18.5 NTU